

CASTLE HILL

TOWN OF SEWALL'S POINT

MARTIN COUNTY, FLORIDA

RECORDING
 MARSHA STILLER, Clerk of the Circuit Court of Martin County, Florida,
 hereby certifies that this plat was filed for record in Plat Book 12,
 at Page 52, Martin County, Florida, public records this
 day of 07 1990.

MARSHA STILLER, Clerk
 Circuit Court
 Martin County, Florida

BY: _____ FILE NO. _____
 DEPUTY CLERK

SHEET 3 OF 3

Mitchell Engineers
 a division of Mitchell-Horn and Associates, Inc.
 11 East Coonata Street, Stuart, Florida 34984-2114

JULY 1991

SURVEYOR'S NOTES :

- The construction within utility, drainage, landscape and/or access easements shall not restrict drainage flow or maintenance thereof, or access to surface water retention tracts.
- This certifies the approval by the Department of Natural Resources of the procedures utilized in the determination of the elevation of mean high water and/or the location of the mean high water line, based upon final D.N.R. approval dated 7-18-90.

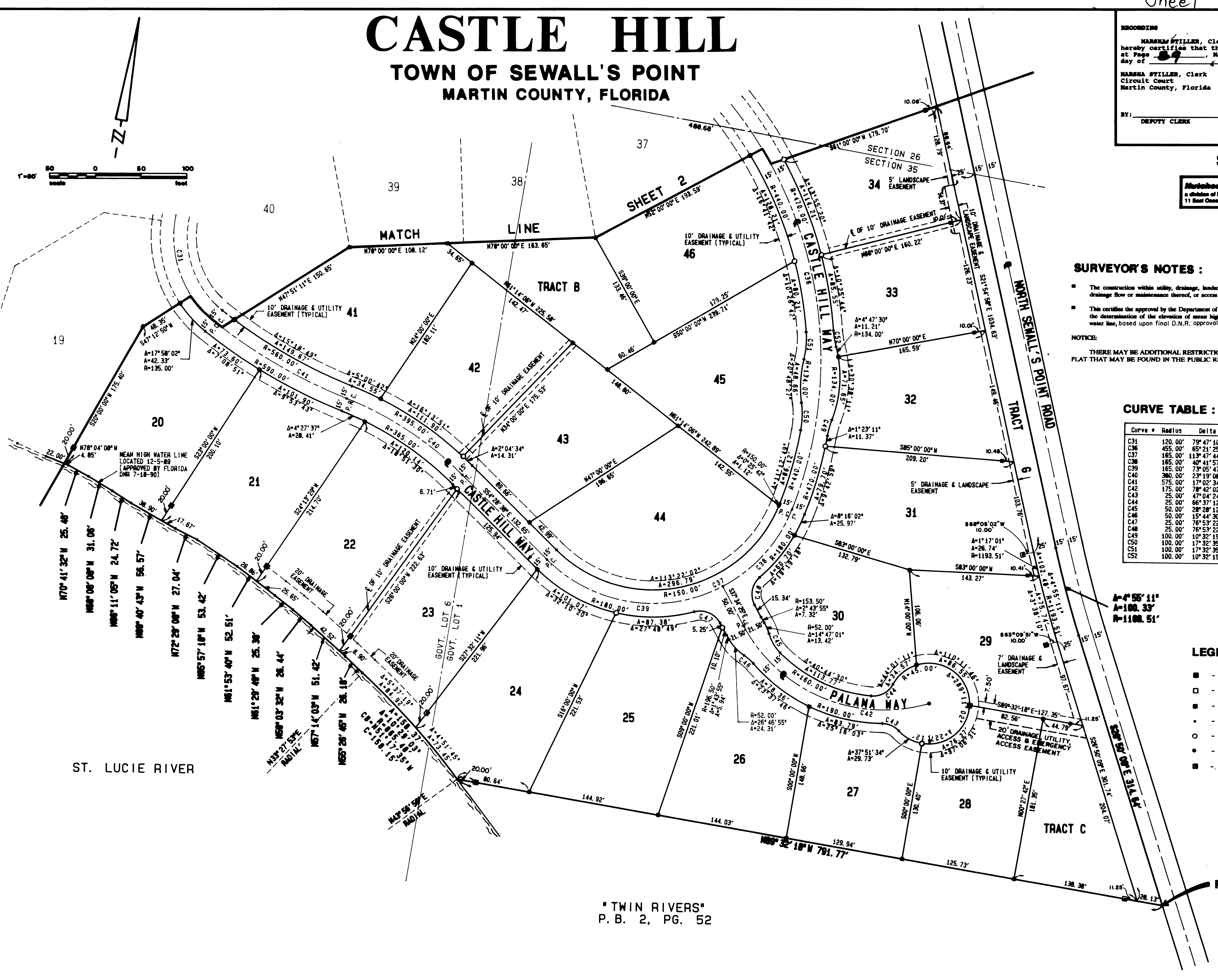
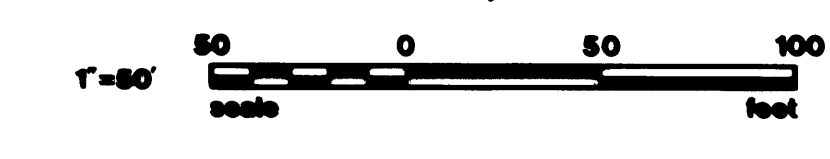
NOTICE:
 THERE MAY BE ADDITIONAL RESTRICTIONS THAT ARE NOT RECORDED ON THIS PLAT THAT MAY BE FOUND IN THE PUBLIC RECORDS OF THIS COUNTY.

CURVE TABLE :

Curve #	Radius	Delta	Length	Tangent	Chord/Brg
C31	120.00'	79°47'10"	167.10'	100.31'	153.93'
C36	455.00'	65°21'25"	519.02'	291.06'	491.33'
C37	165.00'	113°47'44"	327.71'	253.09'	276.44'
C38	165.00'	40°41'57"	61.20'	114.76'	114.76'
C39	165.00'	73°05'47"	210.50'	122.31'	186.51'
C40	300.00'	23°19'08"	154.66'	78.41'	153.59'
C42	575.00'	17°02'34"	171.04'	86.15'	170.41'
C43	175.00'	78°42'02"	240.38'	143.49'	221.92'
C44	25.00'	66°37'12"	29.07'	16.43'	27.46'
C45	50.00'	28°28'12"	24.84'	12.68'	24.59'
C46	50.00'	15°44'30"	13.74'	6.91'	13.69'
C48	25.00'	76°53'22"	33.55'	19.85'	31.09'
C49	100.00'	10°32'19"	18.39'	9.22'	18.37'
C50	100.00'	17°32'35"	30.62'	15.43'	30.50'
C51	100.00'	17°32'35"	30.62'	15.43'	30.50'
C52	100.00'	10°32'19"	18.39'	9.22'	18.37'

LEGEND :

- - SET PERMANENT REFERENCE MONUMENT LS-4049
- - FOUND CONCRETE MONUMENT (AS NOTED)
- - SET CONCRETE MONUMENT
- - SET PERMANENT CONTROL POINT
- - SET P.K. NAIL & WASHER
- - SET IRON ROD & CAP
- - SET REFERENCE CHISEL CUTS IN STORM INLET APRON



TWIN RIVERS
 P. B. 2, PG. 52